

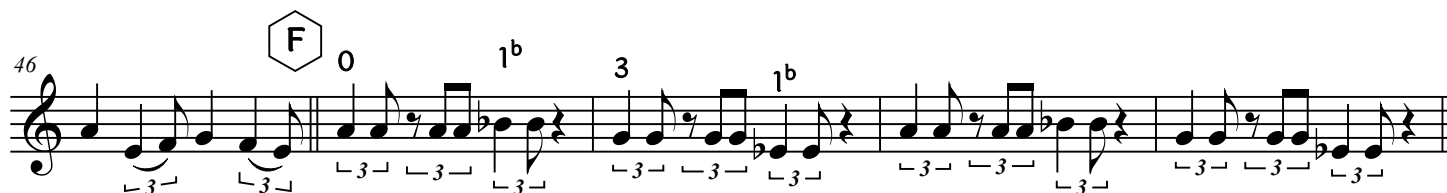
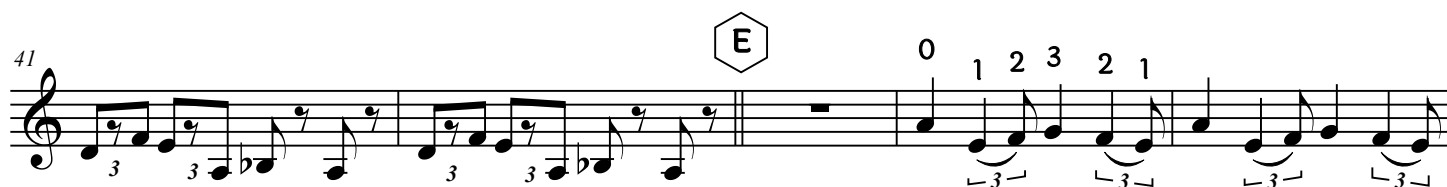
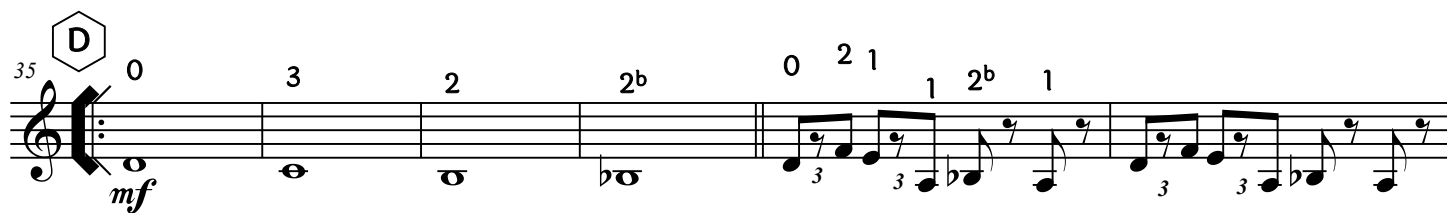
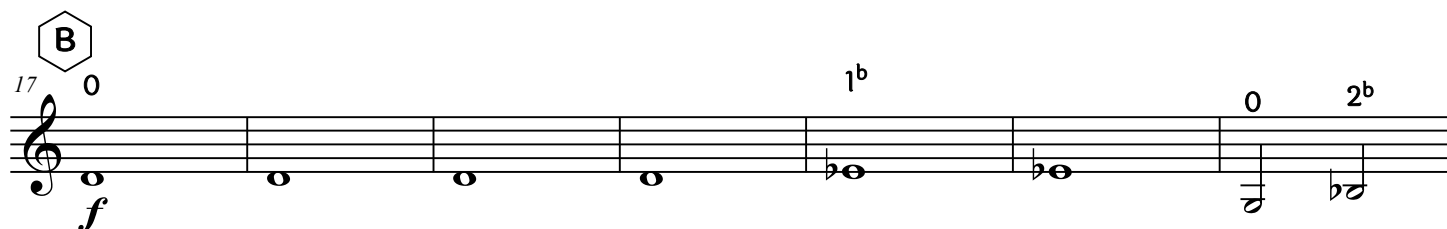
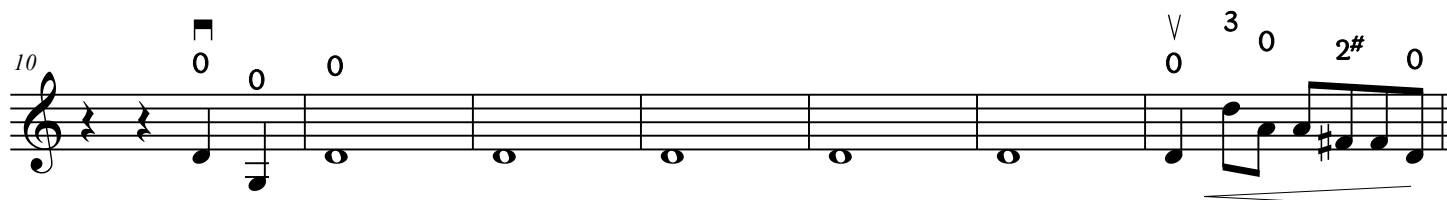
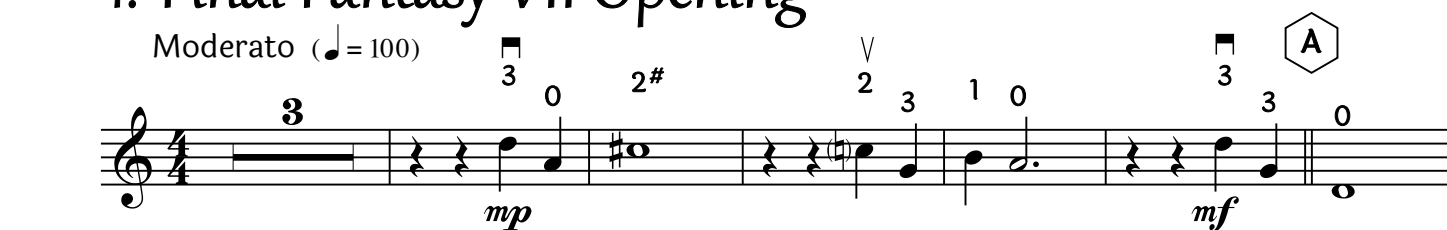
Final Fantasy Suite part 1

Violin to Viola

N. Uematsu
Arr. Pedro Gilabert

1.-Final Fantasy VII Opening

Moderato (♩ = 100)



Final Fantasy Suite

2

51 0 1^b 3 2[#] 0

f *mf*

G

56 3 1 1^b 0 3 1 1^b 0

62 3 1 3

1. 2 2

f

2.-Final Fantasy Main Theme

Maestoso (♩=100)

66 4 4 0 0 1 1 3 1 0 1 0 1 1

mf

H

79 3 2 1 0 0 1 0 1 3 2 0 3 0 0 2 1 0 3 2 3 0 3 2

f

I

86 1 0 1 1 3 2 1 0 0 1 0 1 1 0 0 2 3 0 1 3 0 0 0 1 3 2 1 0

J

93 1 3 1 0 2^b 3 0 1 2[#] 1 2[#] 3 0 1 3 1 2^b 2^b 3 0 1 0 3 0

ritardando (only 2nd)

K

3.-Chocobo theme

Final Fantasy Suite

Allegro (♩=140)

Allegro (♩=140)

99 *mf* **L** 1 1

108 *mp* **M** 1

116 0 2 1 2 1 0 1 0 1 2 3 2 1 0 1

124 0 2 1 2 1 0 1 0 1 0 1 **N** 2

132 0 1 0 1 3 2 0 0 3 1 3 **O** 2

140 1 0 1 0 0 1 1 0 3 2

4.-Final Fantasy IX The place I'll return someday

148 **33**

A musical staff with a treble clef and a 2/4 time signature. A long horizontal line is drawn across the staff, starting from the first line and ending at the second line. Above the staff, the number 148 is written on the left and 33 is written in the center.

5.-Final Fantasy VII Main theme

Moderato (♩ = 100)

The image displays a musical score for the song "The Rose Tree". It consists of two staves, both in 4/4 time and key of D major (two sharps). The first staff begins at measure 181 and features a piano (*pp*) dynamic. It includes a half note on D4, followed by a quarter rest, then a half note on E4, and a quarter rest. This is followed by a double bar line, then a half note on F#4, a quarter note on G4, and a quarter note on A4. After another double bar line, there is a half note on B4, a quarter note on C5, and a quarter note on B4. This is followed by a half note on A4, a quarter note on G4, and a quarter note on F#4. The staff concludes with a half note on E4, a quarter note on D4, and a quarter note on C4. Above the staff, there are fingerings (2, 0, 0, 3, 0) and a hexagonal symbol containing the letter 'S'. The second staff begins at measure 190 and features a piano (*p*) dynamic. It starts with a half note on D4, followed by a quarter rest, then a half note on E4, and a quarter rest. This is followed by a double bar line, then a half note on F#4, a quarter note on G4, and a quarter note on A4. After another double bar line, there is a half note on B4, a quarter note on C5, and a quarter note on B4. This is followed by a half note on A4, a quarter note on G4, and a quarter note on F#4. The staff concludes with a half note on E4, a quarter note on D4, and a quarter note on C4. Above the staff, there are fingerings (1, 1, 0, 1, 3, 1, 0, 1, 0) and a hexagonal symbol containing the letter 'T'. The dynamics *mp* and *p* are also indicated.

198 2 \sharp 0 1 2 1 V 0 1 2 0 3 2 1 2 V 3

206 0 U 3 2 3 1 3 V 0 1 2 1 \flat 0 2 3 V 0 2 3

mf

214 1 3 0 1 3 1 0 V 1 3 0 2 3 3 1 3 0 1

mp

224 2 1 2 3 1 0 0 W V 1 3 0 1 V 0 2 1 2 3 0 0

f

232 3 1 0 3 2 1 X Piu mosso ($\text{♩} = 106$) 2 0 2 \flat 1

mf

239 0 1 0 1 0 Y 1 1

mp

245 2 \flat 0 1 Z 0 0 2 3 1 2 3 0 1 2 0 3 1

mf *f*

251 0 0 2 3 1 2 3 0 1 2 1 0 0 0

f